

Product Specifications

Camera

- 4K dual-lens technology delivers a wide 113° field of view (FOV) with 18X zoom
 - 4K 3X varifocal lens: FOV (D/H/V) 92°/81°/50°
 - 4K fixed lens: FOV (D/H/V) 113°/105°/71°
- Sony 4K sensor: ultra-crystal-clear image in any lighting
- Frame rate: (16:9) 1280 x 720 at 60, 30, 15fps; 4K, 3264 x 1836, 2560 x 1440, 1920 x 1080, 1600 x 900, 960 x 540, 848 x 480, 800 x 448, 640 x 360 at 30, 15fps; (4:3) 1280 x 960, 800 x 600, 640 x 480 at 30, 15fps
- Adjustable audio fence: Freedom to define wide/ medium/ narrow view fence
- SmartFrame & SmartSpeaker: Automatic tracking and FOV adjustment to fit all participants and focus on the speaker
- Presentation mode: Voice-triggered tracking on both defined areas and speakers
- Smart gallery* function enhances visibility
- Gesture control for intuitive camera control
- WDR, white balance and more image settings via PTZApp 2
- Minimum focus distance: 100 cm
- People counting API: Enterprises and third-party software providers can obtain people-counting and meeting-interval data for better understanding meeting space usage
 - *Requires running PTZApp 2 on a PC

Motorized Pan and Tilt Movement

- Pan: Total horizontal viewing area 165°
- Tilt: Total vertical viewing area 101°
- 10 camera presets

Audio

- 14-element beamforming microphone array
- 10-meter pickup range*
- Volume up to 96 dB SPL at 1/2 m
- Echo cancellation
- AI noise suppression
 - *The recommended working distance for AI functionality is within 5 meters.

HDMI

- One cable solution: Built-in USB 3.1 (Gen 1) to HDMI adapter
- 4K HDMI output to TV*
 - *Windows® 7 and MAC OS: Need to install HDMI adapter driver

Connectivity

- 12V/5A power adapter
- Mini DIN 6 for RS-232 connection
- USB 3.1 type B port, backward compatible with USB 2.0
- HDMI out connection (USB to HDMI adapter)
- Phone-in (3.5 mm audio Jack)/speaker-out for HA system*
- RJ45 ports x2: one for Ethernet, one for audio expansion speakerphone/microphone
- USB 2.0 type A x3: Wireless connection**, USB to support IFP USB touch back, and expansion port
 - *Need to set up via PTZApp 2 and purchase an audio-out converter from AVer
 - **Optional wireless dongle needed to connect with mobile phone

Product Appearance

Front



791 mm (L) x 128 mm (W) x 126 mm (H)

Side

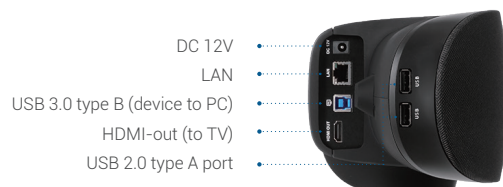


- Phone-in
- Audio expansion
- RS-232
- USB 2.0 type A (wireless dongle)

Back



Cable management clips



- DC 12V
- LAN
- USB 3.0 type B (device to PC)
- HDMI-out (to TV)
- USB 2.0 type A port

Video Format

- YUV, YUY2, M-JPEG
- Network video compression formats: H.264
- Network protocols: RTSP, RTMP

USB

- 3.1 Gen 1, backward compatible with USB 2.0
- UVC 1.1 (USB Video), UAC 1.0 (USB Audio)

Control

- IR remote control
- WebUI: IP access via Chrome browser (Chrome 76.x or later; Internet Explorer not supported)
- VISCA/pelco P/pelco D via RS-232/VISCA over IP
- UVC/UAC plug-and-play
- PTZApp 2

Mount and Security

- Wall-mount bracket (included)
- TV VESA mount kit (optional)
- Kensington security lock

System Requirements

Software:

- Windows® 7/10/11
- Mac OS X 10.14 or later
- Chromebox 3 version 94.0.4606.114 or later

Hardware:

- 3.2 GHz Intel® Core™ i5-4460 processor
- 4 GB RAM or more
- USB 3.1 port, backward compatible with USB 2.0

Power Supply

- AC 100V–240V, 50/60 Hz
- Consumption: 12V/4.5A

Free Applications for Meeting Collaboration (Free Apps support on Windows® and Mac® computers)

EZManager 2: Camera Central Management Software

- Remotely group FW/SW upgrades, control the camera, and manage settings

PTZApp 2: Camera setting software

- View live video/people-counting/meeting-interval information
- Smart Gallery/Preset Link
- Upgrade firmware automatically or manually
- Control the camera
- Set parameters and adjust the camera image
- Diagnose operating status

EZLive: Broadcasting software

- Enjoy multi-camera, annotating, image capturing, and video recording

Environmental Data

- Operation temperature: 0 ~ 40°C
- Operation humidity: 20% ~ 80%
- Storage temperature: -20 ~ 60°C
- Storage humidity: 20% ~ 80%

Package Contents

- VB350 unit
- Power adapter & cable
- USB 3.1 type B to type A cable (3 m)
- USB 3.1 type A to type C adapter
- QR code card
- Wall-mount bracket
- Tripod Screws
- Remote control
- Wall-mount drill paper

Optional Accessories

- Mini DIN 6 to RS-232 adapter
- TV VESA mount
- 10 m/20 m expansion microphone
- 10 m/20 m expansion speakerphone
- 5 m USB 2.0 type B to type A cable
- Wireless dongle (for connecting with mobile phone)
- Audio-out converter (TRS female to TRRS male)

Dimensions

- Package dimensions: 872 mm (L) x 197 mm (W) x 260 mm (H)
- Package weight: 7.4 kg
- Camera: 791 mm (L) x 128 mm (W) x 126 mm (H)/3.3 kg
- Remote control: 150 mm (L) x 42 mm (W) x 19 mm (H)/50 g

Warranty*

- Camera: 3 years
- Accessories: 1 year
 - *We offer an optional 2-year extended warranty in the European area. Please contact your local agency for details.

Compatible Applications

Zoom, Microsoft® Teams, Skype for Business, Skype, Google Meet™, Intel® Unite™, RingCentral, BlueJeans, V-Cube, LiveOn, CyberLink U Meeting®, TrueConf, Adobe® Connect, Cisco WebEx®, Fuze, GoToMeeting™, Microsoft® Lync™, Vido, vMix, WebRTC, Wirecast, XSplit, V Cube

*For 4K UHD support, please check system/hardware requirements with your software application provider.

** Specifications may vary depending on location and are subject to change without notice.



Capture more



VB350

Dual Lens PTZ Video Bar With a Hybrid 18X Zoom for Medium & Large Rooms



Distributor/Dealer

With a streamlined design, dual 4K lenses, seamless lens switching, upgraded audio technology, and simple setup, the VB350 is the ultimate all-in-one solution for next-level video meetings. Level up to premium audio and video by using this powerful new video bar in your mid-to-large conference rooms.



Hybrid 18X Zoom Captures Farther and Clearer

Elevate your video meeting experience with the VB350 and its dual 4K lens technology. Boasting a 113° field of view and hybrid 18X zoom, the VB350 captures crystal-clear images of the foreground and background in meeting rooms up to 7 meters deep.



Stable Lens Switching Enables Inclusive and Engaging Hybrid Teamwork

Don't let jarring lens transitions interrupt your meetings. The VB350's stable lens switching captures attendees in sharp detail, even when they sit far from the camera. Enjoy seamless conversations thanks to ultra-smooth lens shifting.



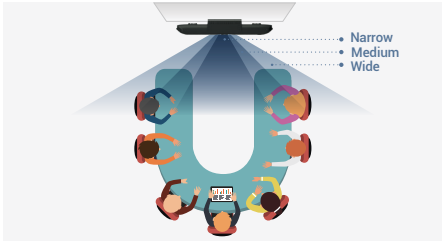
Conversation View Reduces Camera Movement

Give remote participants a smoother image with Conversation View. In audio tracking mode, the camera will track whoever speaks continuously. But when others join the conversation, the camera switches to auto framing mode and captures all attendees instead of individual speakers.



Audio Fence Eliminates Background Noise

Say goodbye to unwanted noise with AVer's audio fence technology. This feature blocks out background distractions and captures only the voices within the camera's viewing area. Now you can have uninterrupted remote collaboration even in open workspaces.



14-Microphone Array Delivers Lifelike Audio

Enjoy clear and natural-sounding voices in your meetings. The VB350 is equipped with a 14-element microphone array pickup that precisely reproduces resonant sound from up to 10 meters away. Experience seamless conversations and lifelike audio that makes your remote meetings feel like in-person gatherings.



Audio Tracking



4K



Dual Lens



18X Hybrid Zoom



Audio Fence



Beamforming Technology